

INSTALLATION GUIDE

PERMiT Pipeline Erosion Risk Mitigation Toolbox

 TridiagonalTM
Solutions
compute | innovate | develop

TABLE OF CONTENTS

1. INSTALLATION PROCEDURE	1
1.1. HOW TO INSTALL PERMIT.....	1
1.2. UNZIP OpenFOAM 6.0.....	4
2. PREFERENCES & LICENSE SETTINGS	6
2.1. PREFERENCES	6
2.2. LICENSE SETTINGS	8
2.2.1. NODE LOCKED	8
2.2.2. LICENSE SERVER.....	10

1. INSTALLATION PROCEDURE

Before the installation process, please take a note that PERMiT has been developed for windows supported operating system.

Let's complete the installation procedure by following the steps:

1.1. HOW TO INSTALL PERMiT

Double click on PERMiT application (.exe) provided from the point of contact to start the installation process:

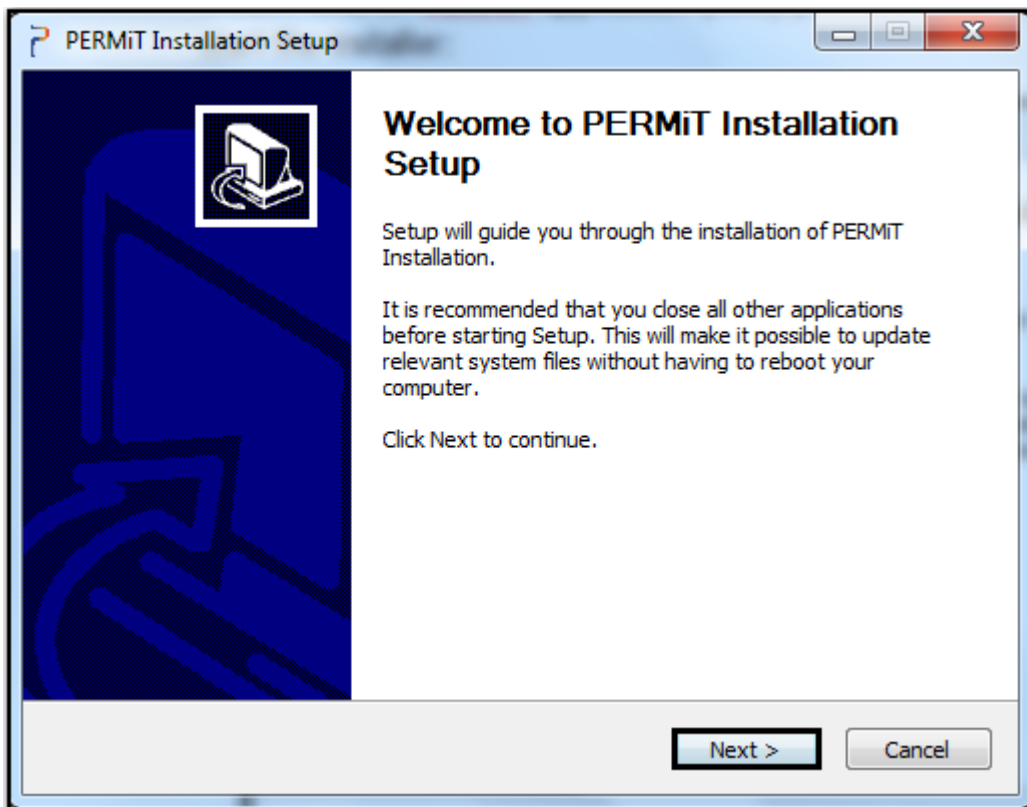
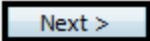


Figure 1: PERMiT Installation Setup

Click the  button to proceed further, and choose components to install:

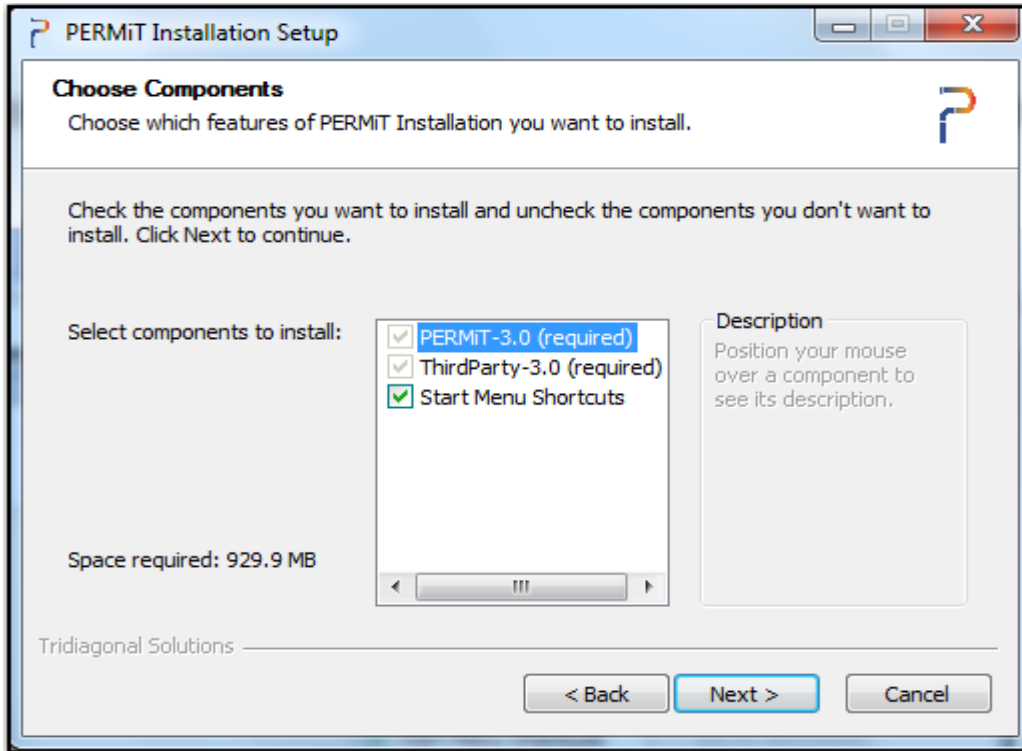


Figure 2: Choose Components

Then click the **Next >** button, and project directory will be set by default for the PERMiT users:

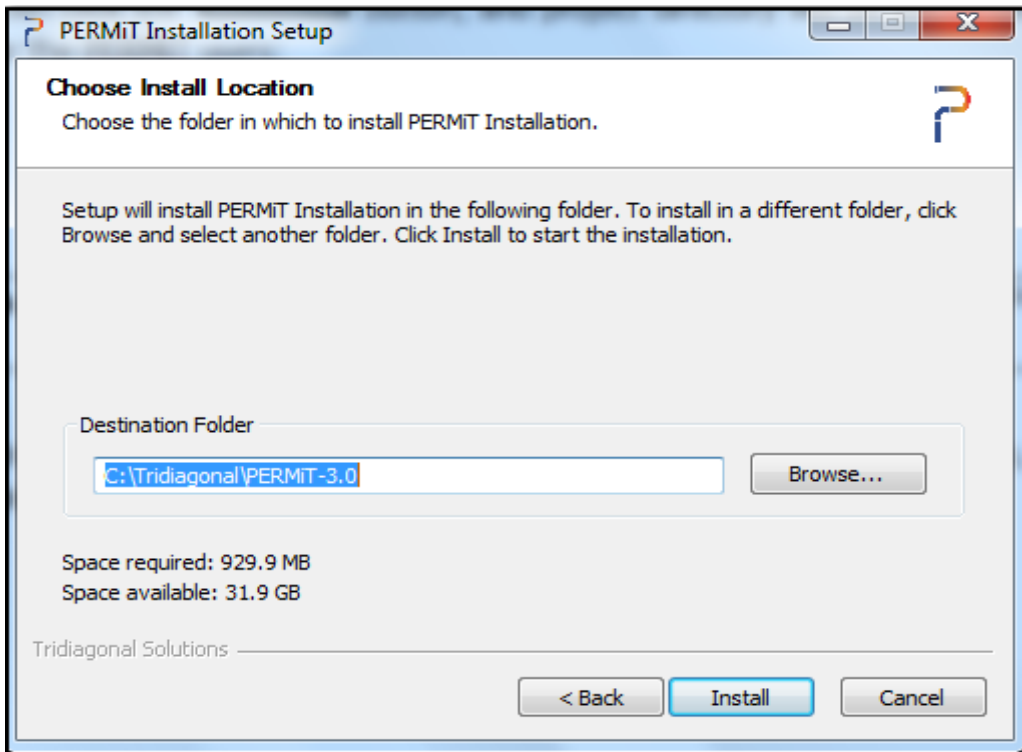

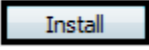


Figure 3: Choose Install Location

 **Note** PERMiT also allows you to change the path but ensure that format of the path should be maintained same as shown in **Figure 3**.

Now click the  button to start the installation process:

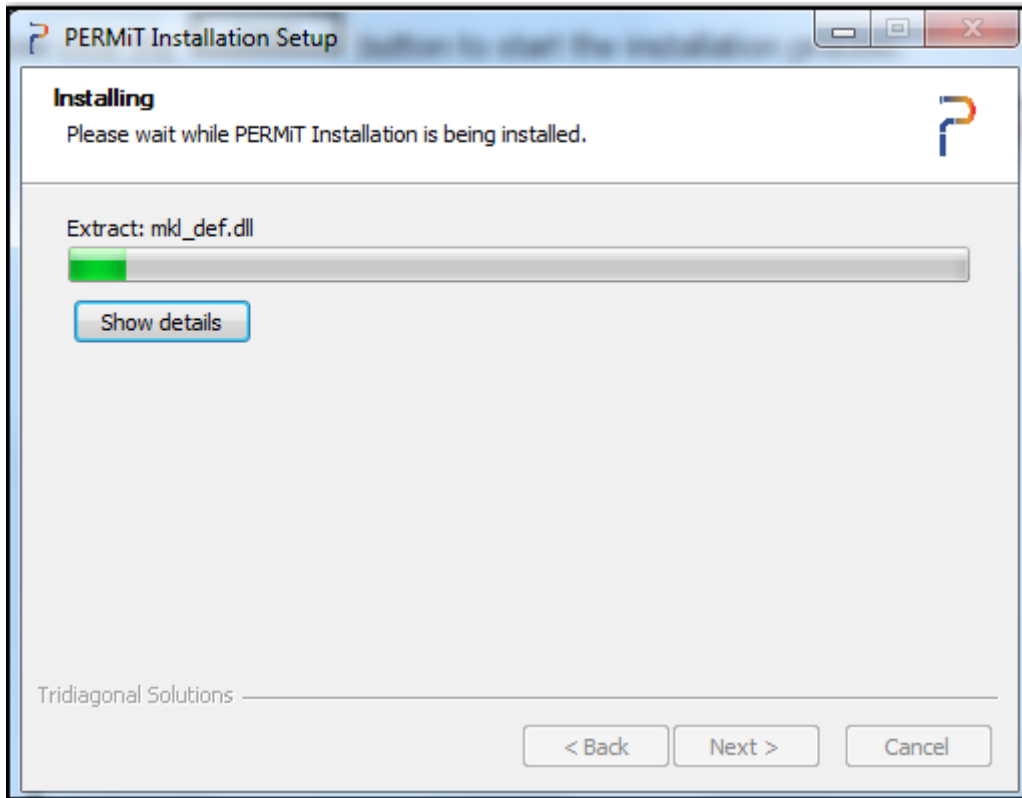
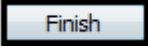


Figure 4: Installing

After the installation process is done, then click the  button to close the dialog:

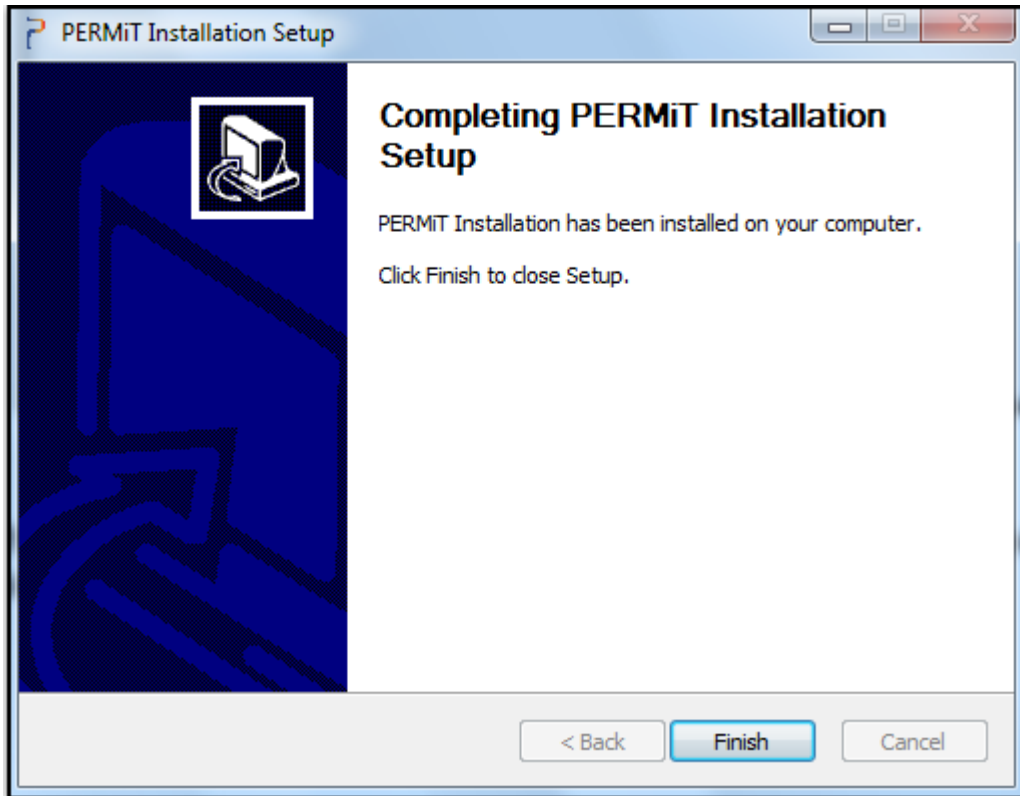


Figure 5: Completing PERMiT Installation Setup

Now launch the application, and follow the next section to configure other details.

1.2. UNZIP OpenFOAM 6.0

In this section, we will focus on how to unzip OpenFOAM-6.0.7z provided from the point of contact.

Firstly, right-click on **OpenFOAM-6.0.7z**, select **7z**, and choose **Extract files**:

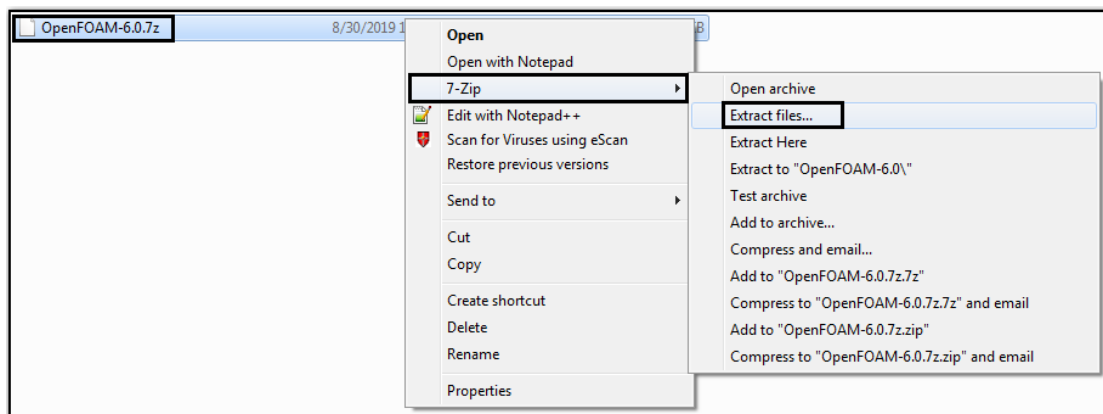
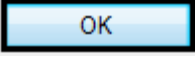


Figure 6: Unzip OpenFOAM 6.0

Secondly, select the **Extract to** path, and click on the  button:

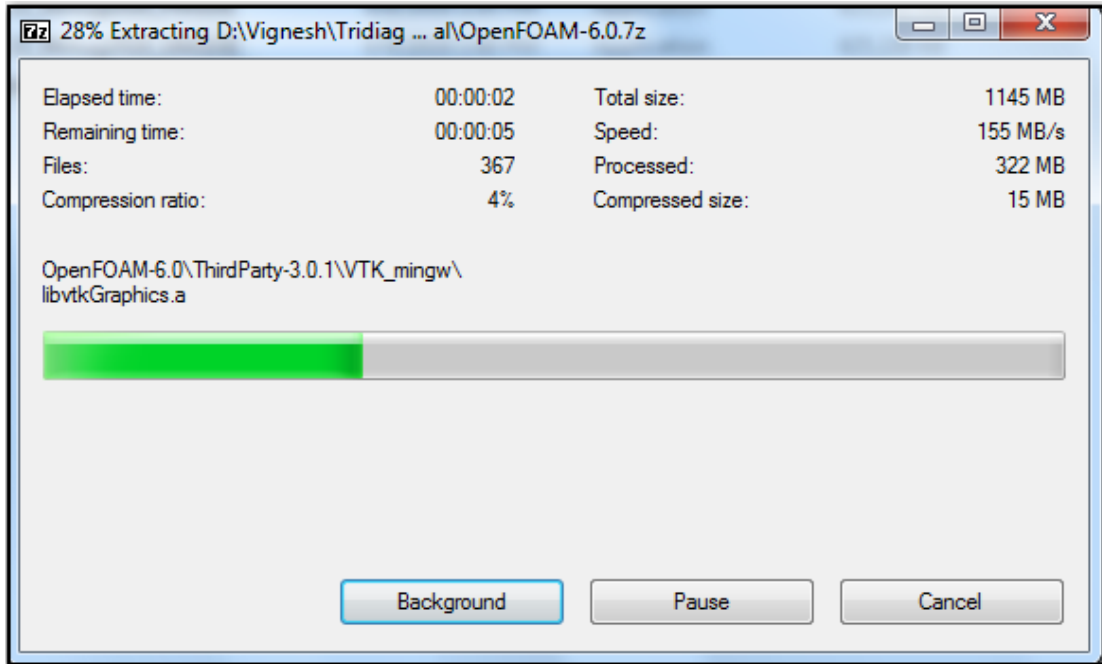


Figure 7: Extracting OpenFOAM-6.0.7z

Now let's move onto the last section to specify, and set preferences, and configuration details.

2. PREFERENCES & LICENSE SETTINGS

Double click on the PERMiT icon to launch the application, and then interface prompts you to set preferences, license, and solver settings:

2.1. PREFERENCES

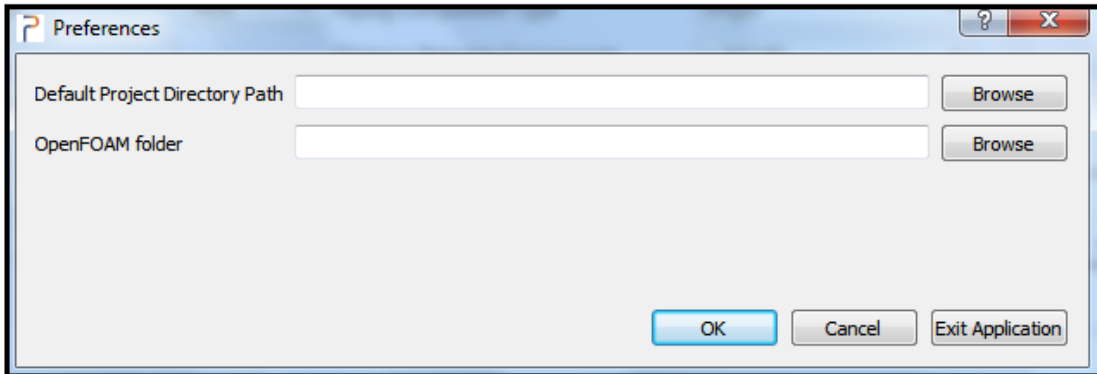


Figure 8: Preferences

DEFAULT PROJECT DIRECTORY PATH

Create a folder, and name it accordingly, and click the **Browse** button to give path of that folder which will help to open, and save the project case:

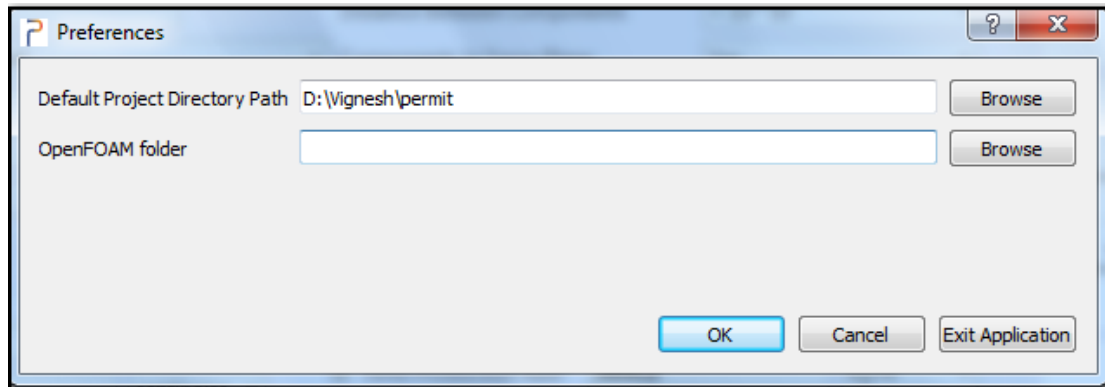


Figure 9: Preferences - Default Project Directory Path

OPENFOAM FOLDER

To specify the path of OpenFOAM folder, follow the figure, and copy the address as highlighted here, where [OpenFOAM](#) folder has been unzipped:

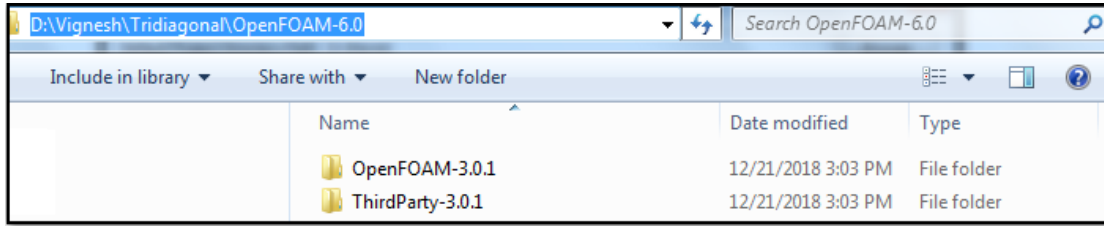


Figure 10: Path of OpenFOAM-6.0

Now paste the address as shown here:

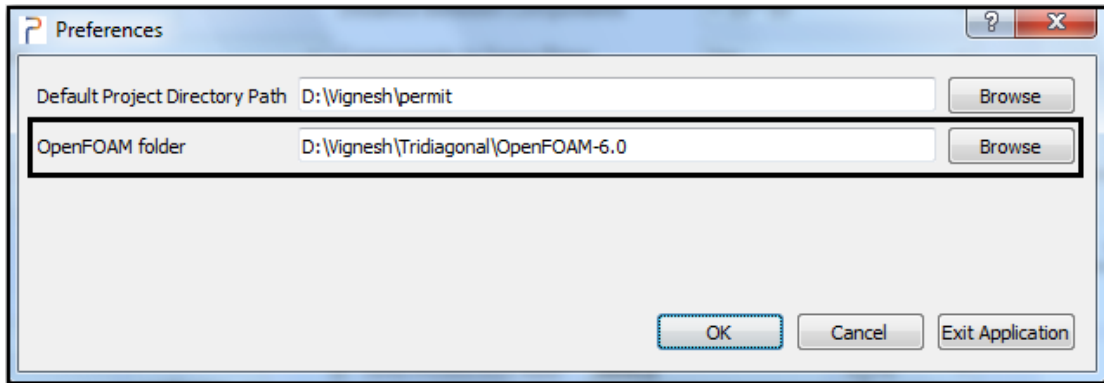


Figure 11: Preferences - OpenFOAM folder

Once every detail of preferences is set, then click the **OK** button to complete preferences setting procedure with a quick info message:

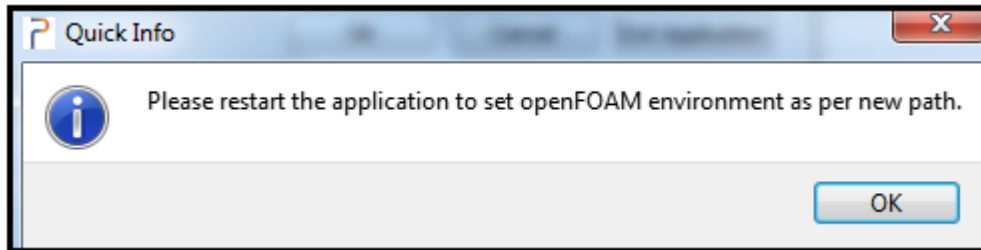


Figure 12: Quick Info

After updating preferences successfully, click on the **OK** button to close the dialog:

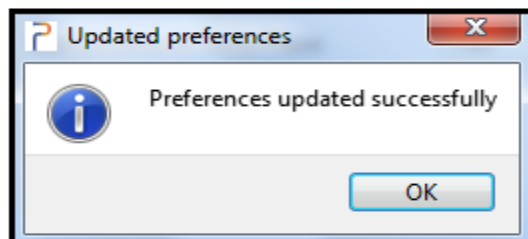


Figure 13: Updated Preferences

2.2. LICENSE SETTINGS

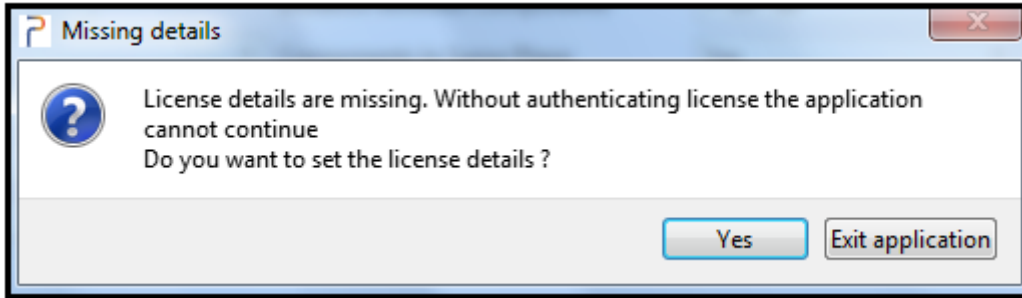


Figure 14: License Settings

To set license settings, click the button to proceed further.

2.2.1. NODE LOCKED

STEPS TO CONFIGURE NODE LOCKED

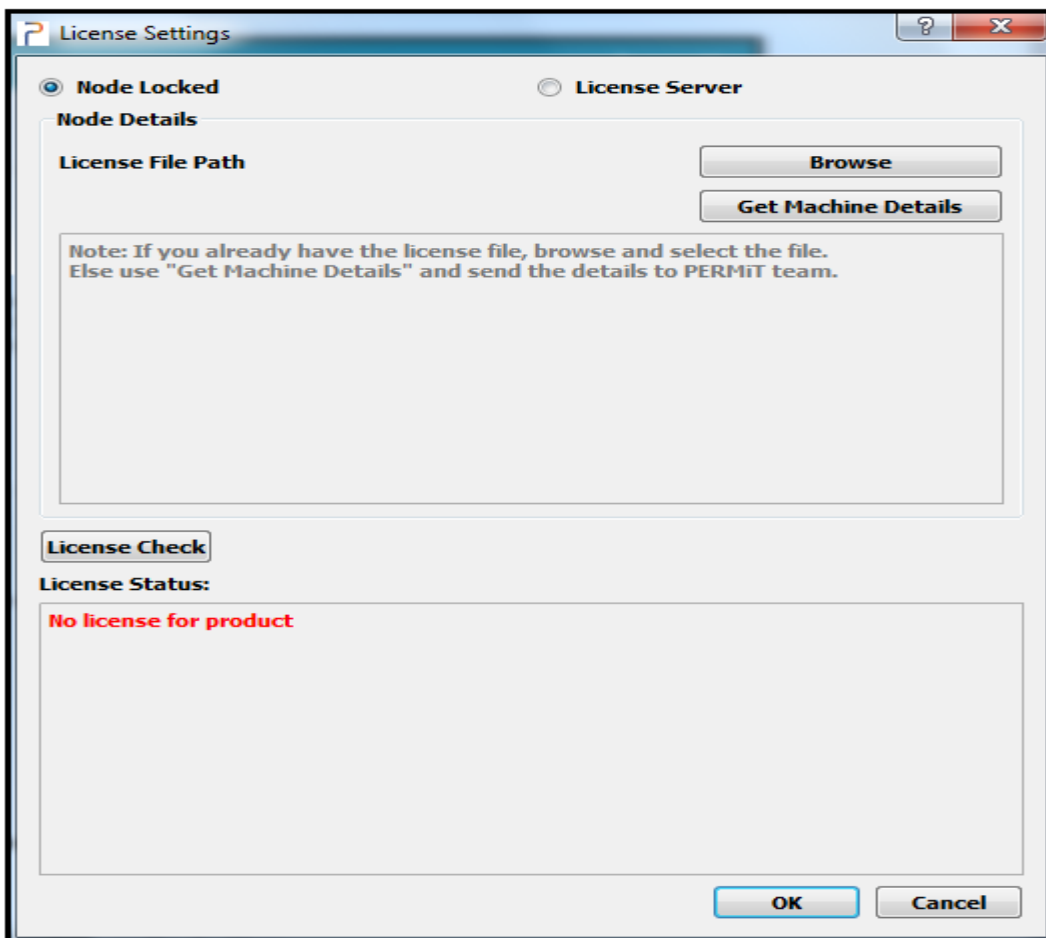


Figure 15: Node Locked

- Enable the **Node Locked** radio button.
- Click **Get Machine Details** button to save the machine details file, and send to the point of contact, i.e. Tridiagonal Solutions.
- After receiving the file, click the **Browse** button to activate the license.
- Then you can click the **License Check** button to view the status:

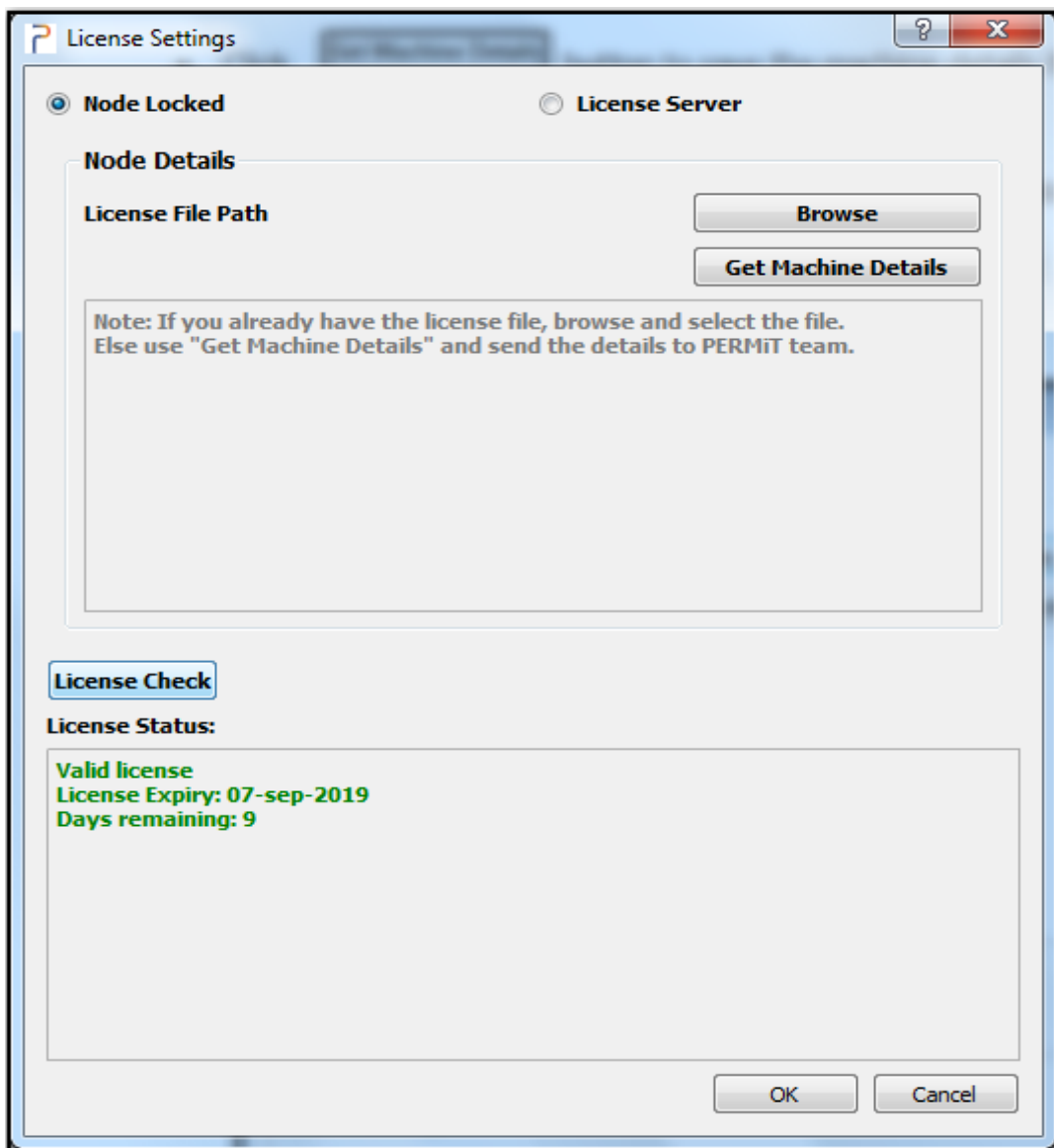


Figure 16: Node Locked License Status

- Now close the configuration dialog with a click on the **OK** button.

2.2.2. LICENSE SERVER

The screenshot shows a dialog box titled "License Settings". At the top, there are two radio buttons: "Node Locked" (unselected) and "License Server" (selected). Below the radio buttons is a section titled "License Server Details" which contains four input fields: "Hostname / IP Address", "Port Number", "Total Licenses" (with the value "0"), and "Free Licenses" (with the value "0"). Below these fields is a "License Check" button and a "License Status:" label above a large empty text area. At the bottom right of the dialog are "OK" and "Cancel" buttons.

Figure 17: License Server

STEPS TO CONFIGURE LICENSE SERVER

- Enable the **License Server** radio button.
- Enter the **IP Address** and **Port Number**.

- After entering the details, you can click the **License Check** button to view the status:

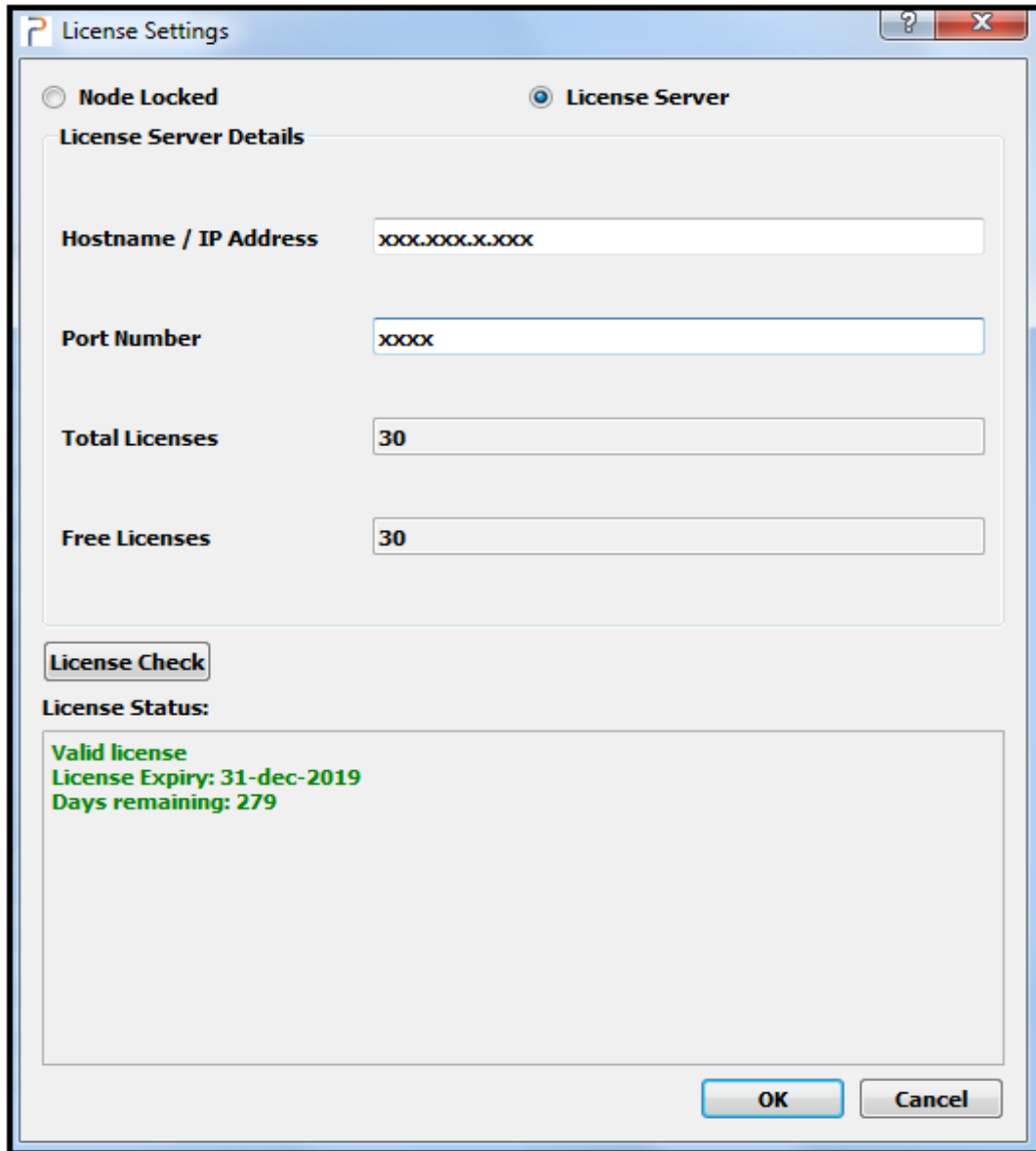


Figure 18: License Settings Status

- Once, **License Server** is set, click the **OK** button to complete the configuration.